

## CHEMI-SMART 3000

> POWER and versatility

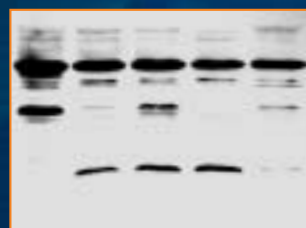
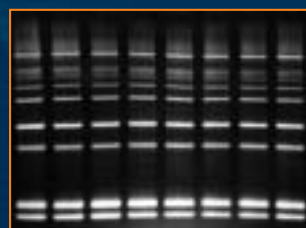
The Chemi-Smart 3000 is an image acquisition system for the capture of chemiluminescent and fluorescent gel images. Using the most advanced cooled CCD technology in combination with a motorized zoom, the Chemi-Smart 3000 offers the power of high sensitivity for multiple applications.

The cooled 1.3 million pixels camera acquires high sensitivity and high-resolution images. The unique darkroom is equipped with our exclusive double cooling barrier for enhanced signal to noise ratio. It also accommodates a transilluminator for fluorescence applications.

Together with Bio-Profil software, Chemi-Smart 3000 forms a complete and powerful system for quantification and documentation.

### Key features

- One instrument for chemiluminescence, fluorescence and chemi-fluorescence
- Exquisite sensitivity and precision
- Motorized zoom lens fully computer controlled and GLP compliant
- Filters slide
- Latest generation of cooled CCD sensor
- Outstanding quantum efficiency for chemiluminescence applications
- Convenient darkroom especially developed for chemiluminescence
- Double cooling barrier for enhanced signal to noise ratio
- Images captured through either a fully automatic mode, a manual mode or a video mode for sequential capture
- Images compatible with Bio-Profil software



### Applications

#### Chemiluminescence

- ECL™, ECL plus™
- CDP Star™
- SuperSignal™
- CSPD™

#### Nucleic acid detection

- Ethidium bromide
- SYBR™ Green
- SYBR™ Gold
- Texas red
- Gel Star
- Fluorescein

#### Protein detection

- Coomassie blue
- Sypro™ Orange
- Sypro™ Red
- Silver Star

#### Other

- Petri dish imaging
- Microplate imaging
- Autoradiograph imaging

